

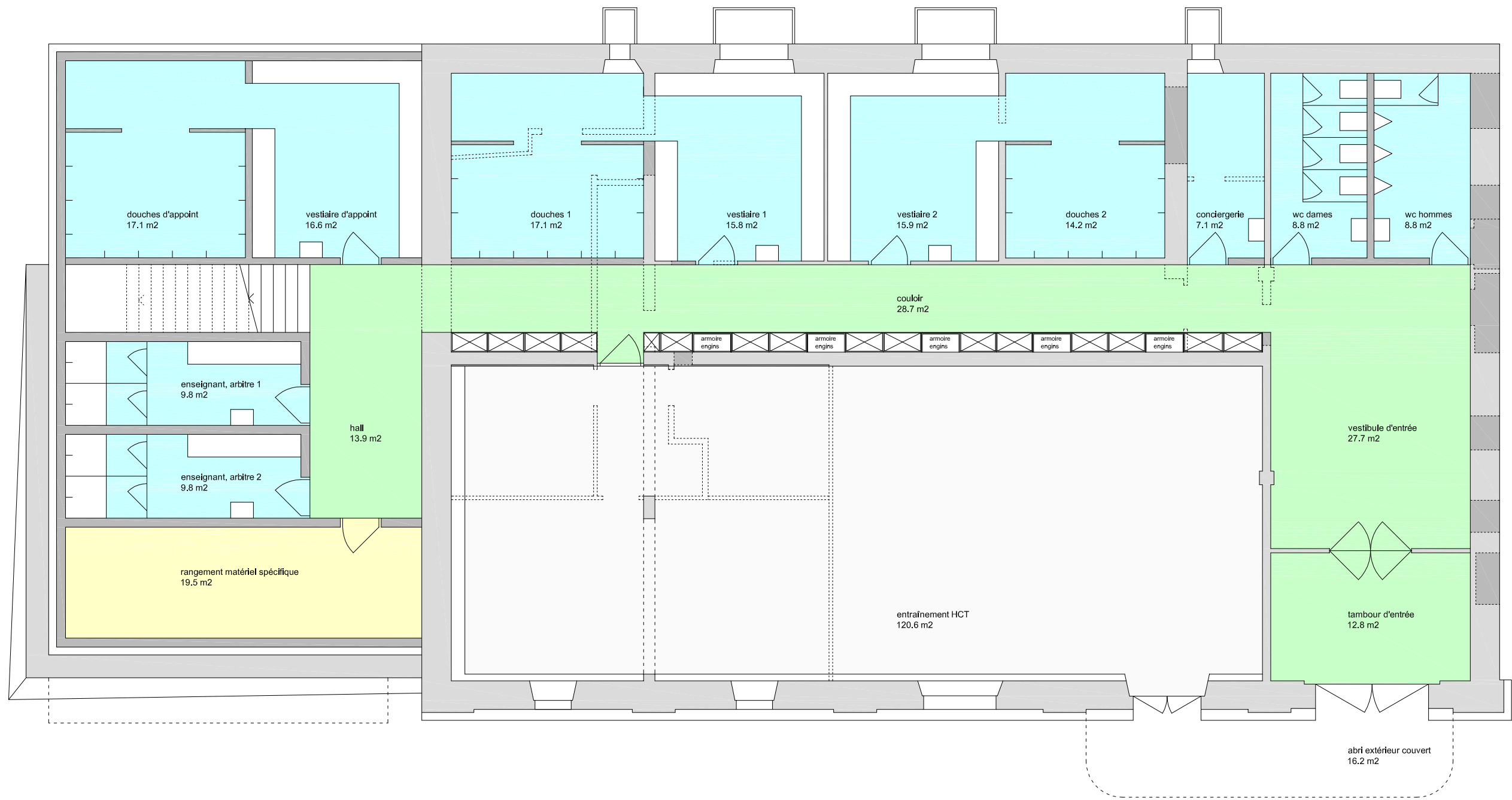
Date : 04.07.2006

1 cm ¹ mesuré à l'échelle :	1:50 aune	1:100 aune	1:200 aune	1:250 aune	1:500 aune	1:1000 aune	1:2000 aune	1:2500 aune	1:5000 aune	1:10000 aune
correspond à :	0,5 m ¹	1 m ¹	2 m ¹	2,5 m ¹	5 m ¹	10 m ¹	20 m ¹	25 m ¹	50 m ¹	100 m ¹

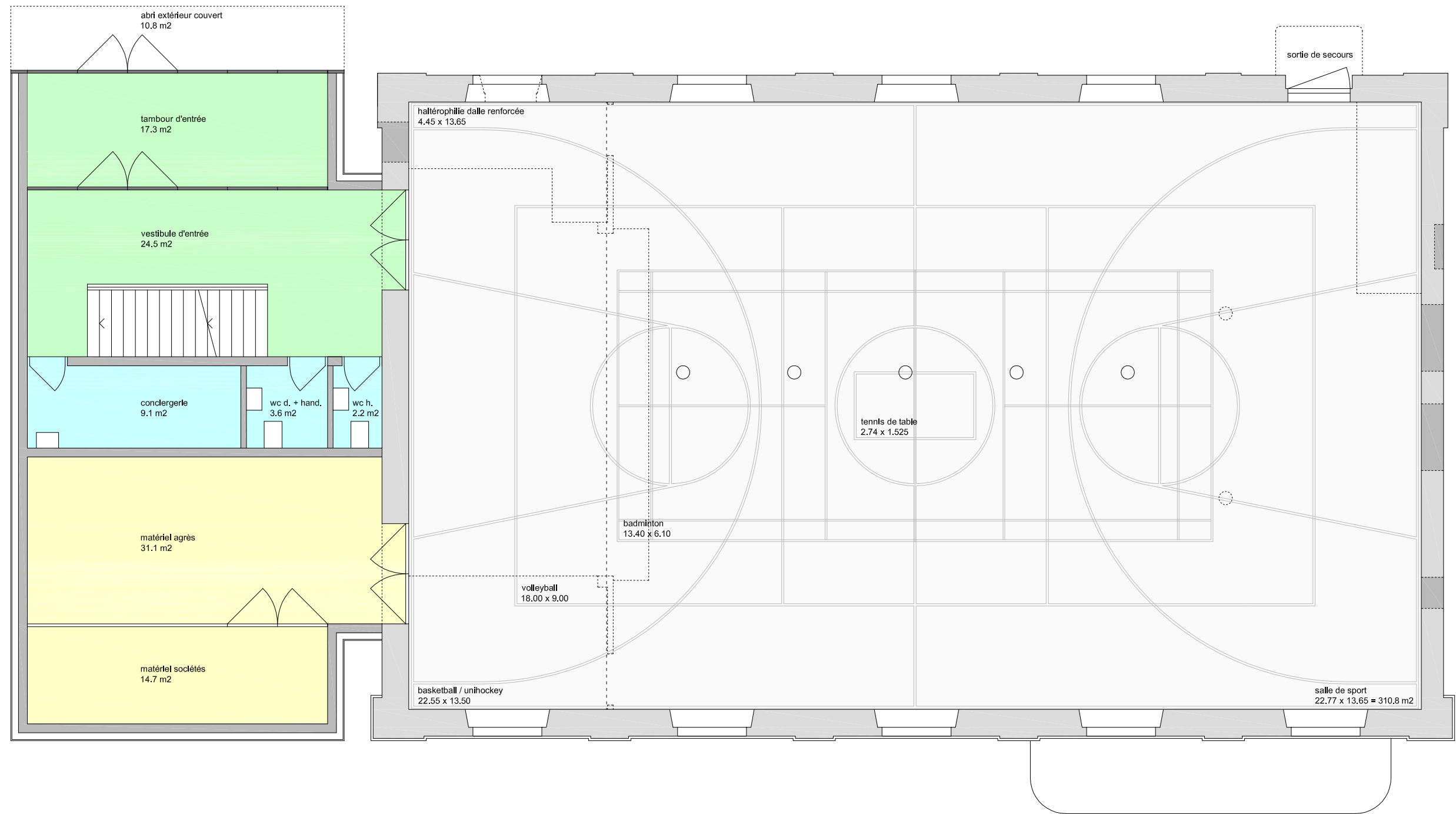
ECH. 1:500

c:\berit\plot\shk.1 04.07.2006 08:40:49

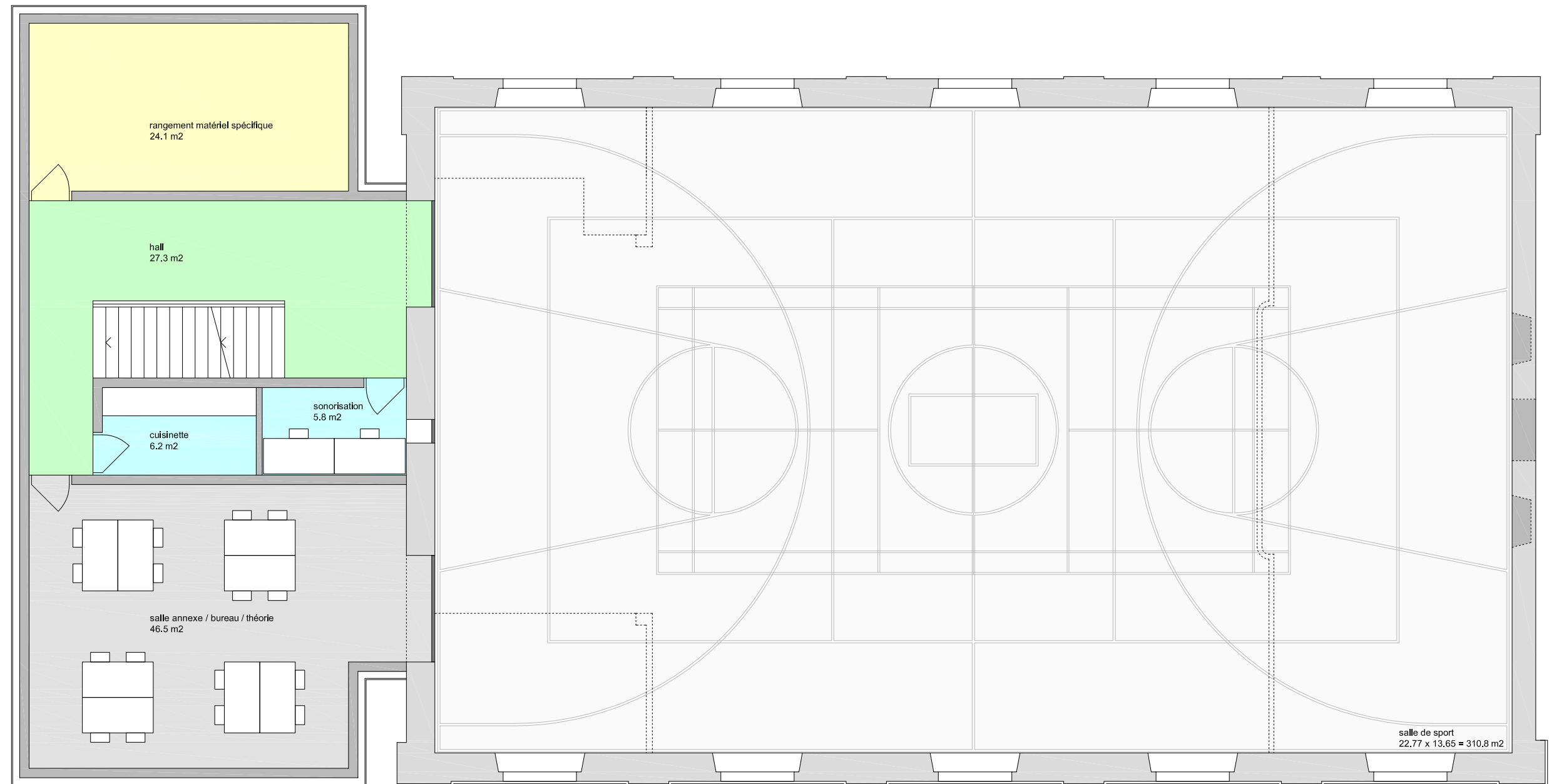
situation 1/500



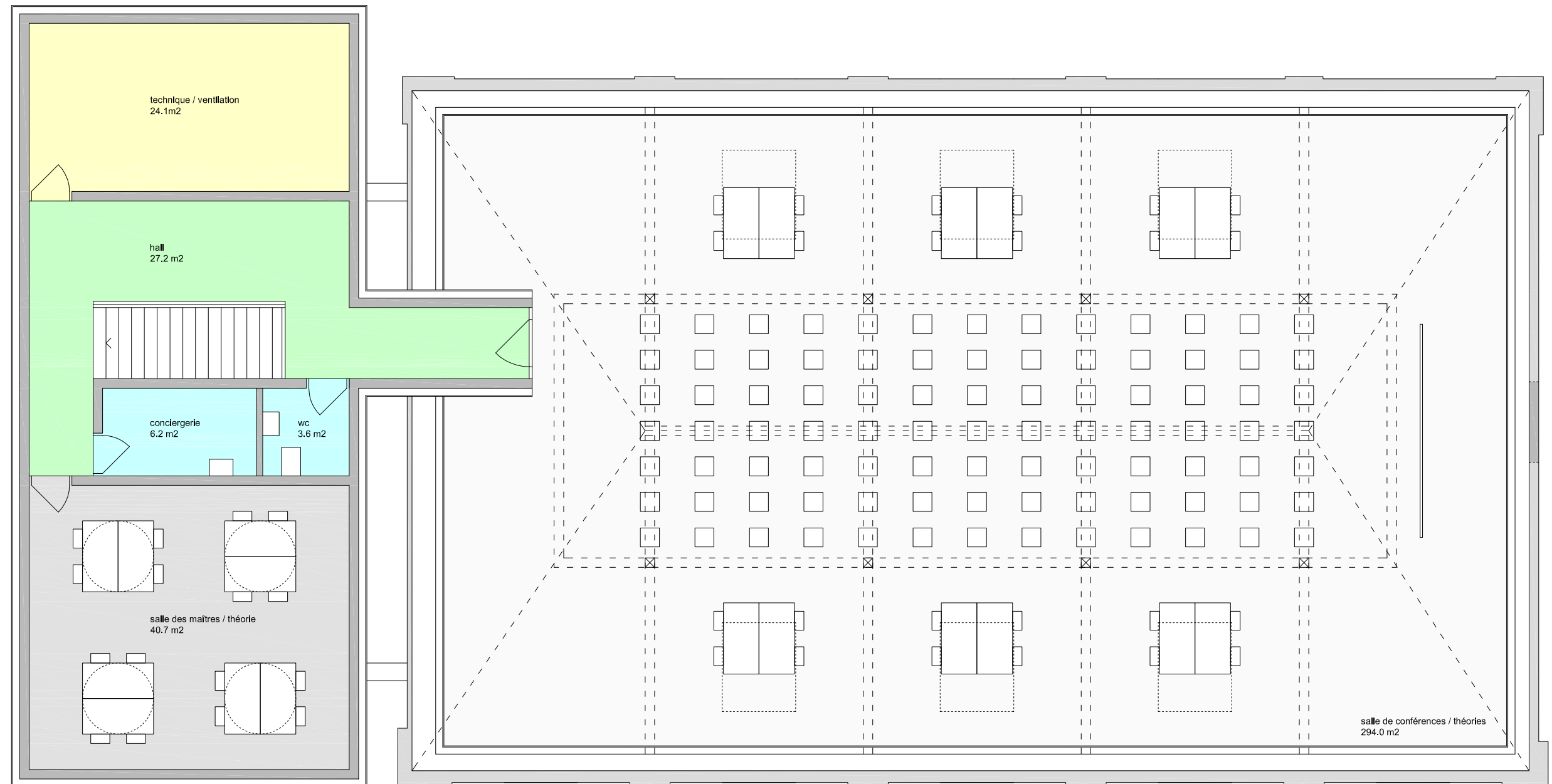
sous-sol (-300) 1/100



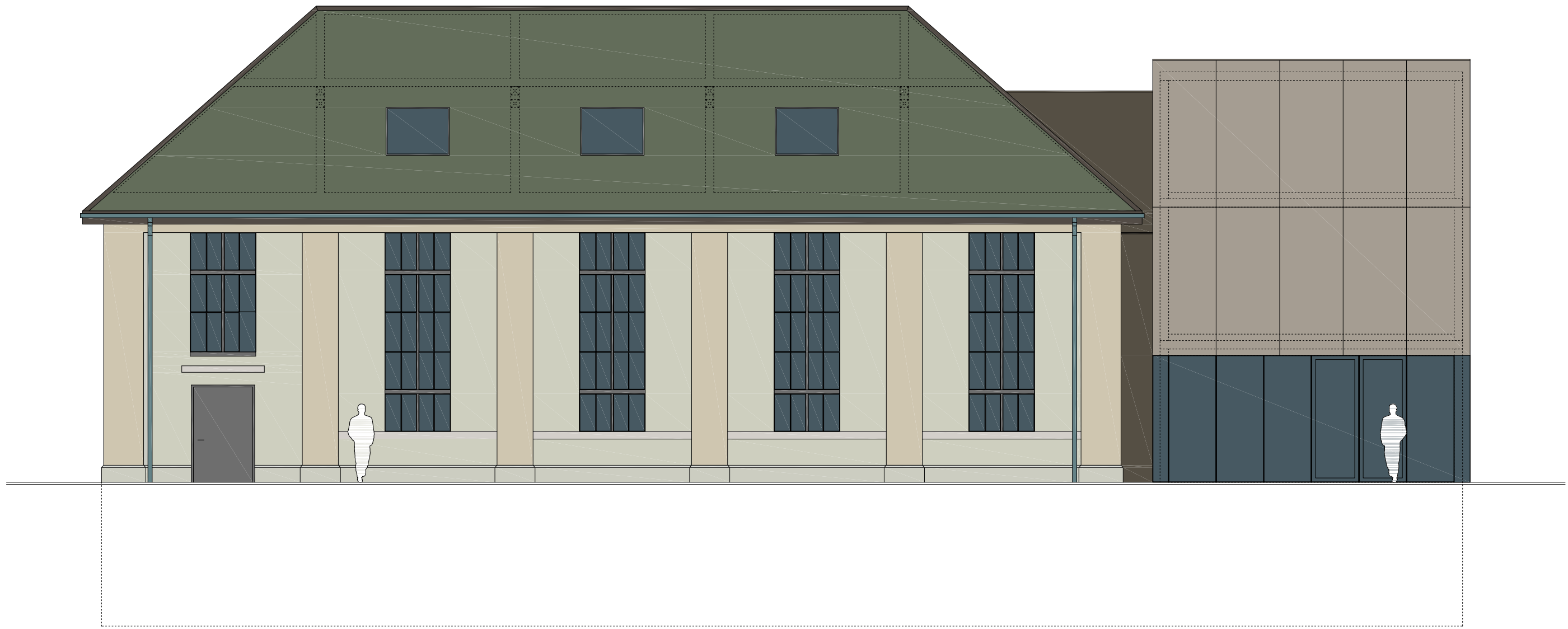
rez-de-chaussée (±000) 1/100



1er étage (+350) 1/100



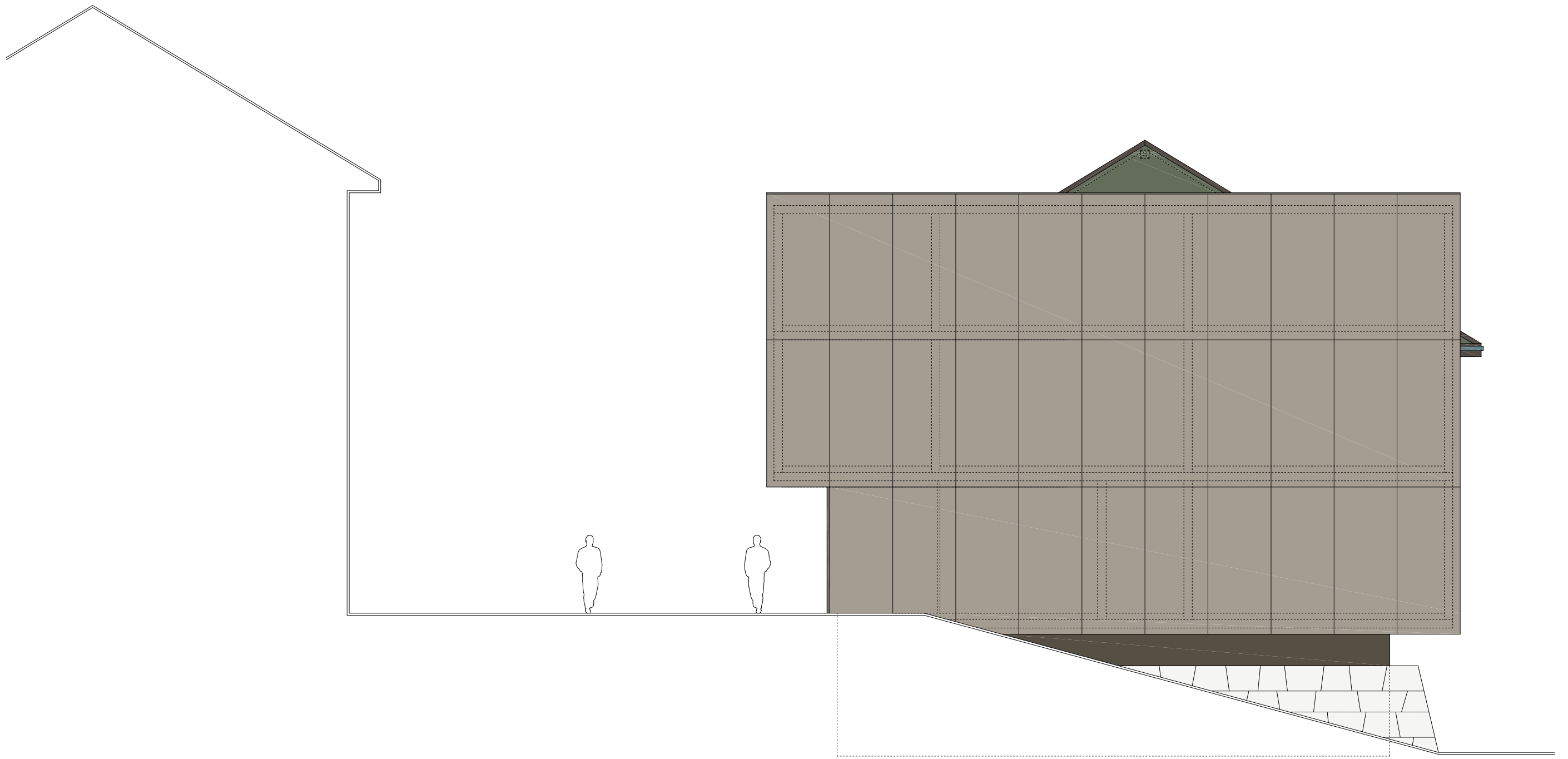
combles (+685) 1/100



façade nord 1/100



façade sud 1/100



façade ouest 1/100



coupe ouest-est 1/100